

CONTINUOUS STEP / PALLET MONITORING

Main features

Our value add

The collapse of an escalator step or moving walk pallet is a very rare accident, cause is usually related to a passenger carrying objects that get stuck in the machine, but its consequences are severe for passengers.

The installation of a continuous broken step / pallet monitoring that runs along the full length of the escalator or moving walk provides a solution to avoid risk of sagging or breakage of the steps / pallets in the middle of the machine, preventing passengers from severe injuries.



Application

All units, specially recommended for infrastructure highly demanded units such as metros and urban mobility



Focus areas

Optional safety feature standardised for NI / MOD / SERV



Market segment

- Commercial: Retail / Office / Mixed-Use
- Buildings Infrastructure & Transport: Airport / Metro / Railway / Urban Mobility / Ferry
- Railway / Urban Mobility / Ferry



Products

velino series / tugela / victoria / orinoco



Standards

Enhanced safety feature beyond requirements of current standards:
 EN 115-1:2017
 ASME A17.1-2016 / CSA B44-16
 GB 16899-2011 / TSG 7007 2016



Climatic conditions

All climate classes:
 Class I, II, III, IV, V



Nominal step / pallet width

3 EK = 0.6m | 4 EK = 0.8m | 5 EK = 1.0m



Contact

info@tkelevator.com
 www.tkelevator.com

Technology

Design

The design of the Continuous Broken Step / Pallet Monitoring system consists of a sensing edge installed along the escalator under the step / pallet band.



The system consists on the following components:

- Safety edge and control unit
- Supporting guide for the safety edge
- Fixations to the truss

The sensing edge is activated by contact of the step / pallet in the event of sagging or breakage.



Additional information

The current sagging step safety device shall be kept in order to protect additionally against missing / breaking step roller.

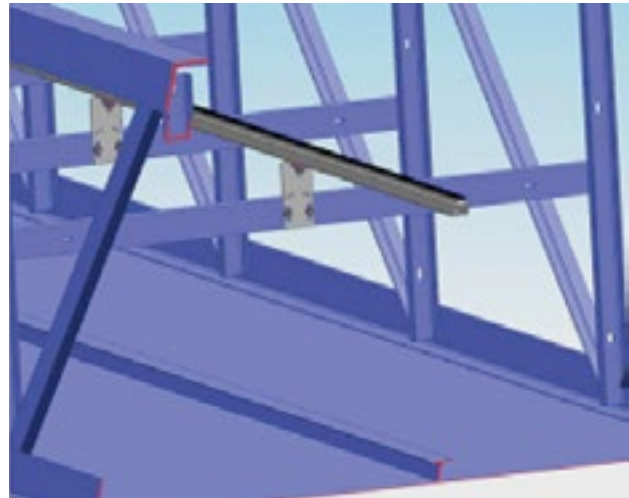


Availability of the system in the curved areas depending on step type and escalator inclination angle

The sensing edge is supported and fixed to a C-profile.



The C-profiles are fixed to the escalator / moving walk with supporting plates that allow vertical regulation.



For additional information, please contact:

- PLM: elena.gonzalezr@tkelevator.com
- PDC Gijón: alberto.pello@tkelevator.com